

EEI - Installing P6 EPPM Client

This document describes how to install Primavera P6 EPPM Client using clickonce

Downloading

The ClickOnce installer can be downloaded at the URL below:

<https://p6eei.emerald-associates.com/p6professionalcloud/en/publishP6.html>

Click on the "Install 64-bit" to download the installer:

Installing P6 Professional for the First Time

If you have never installed P6 Professional, click [Install 64-bit](#) to begin P6 Professional ClickOnce installation. ClickOnce installation will check and install any missing prerequisites before beginning installation.

Installation

This does not require administrator permissions.

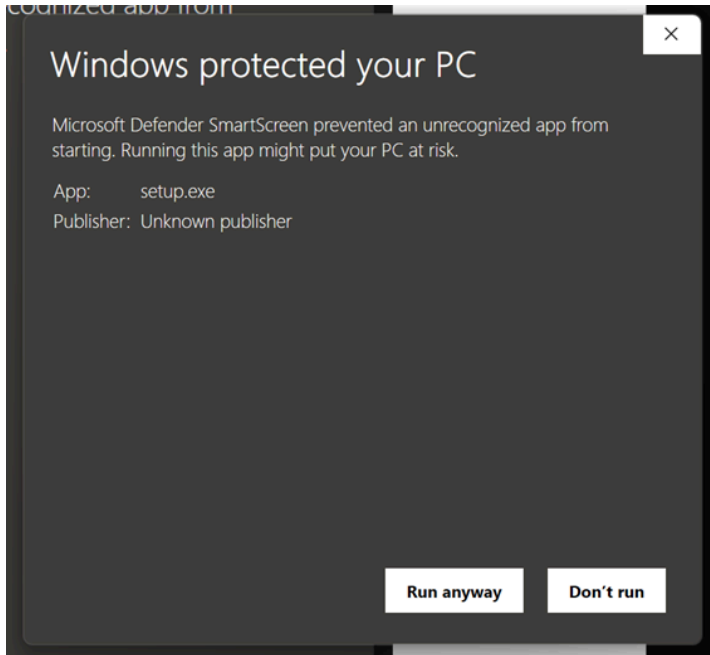
Step-by-step how to go over the Installation procedure.

You will be presented with a warning from Windows:

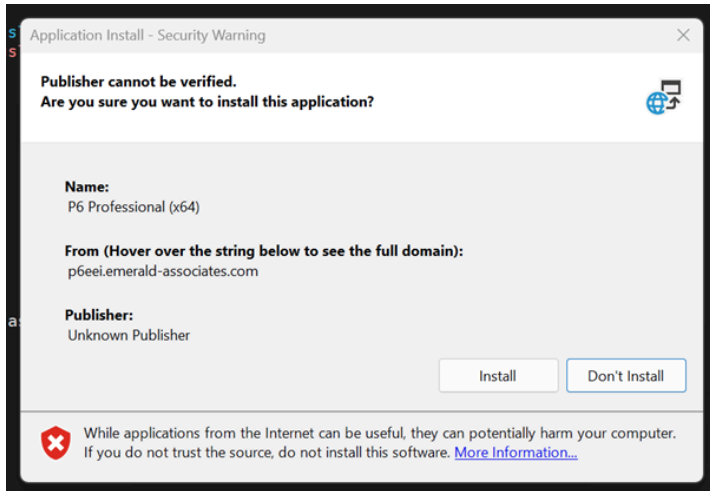


Click on "More info"

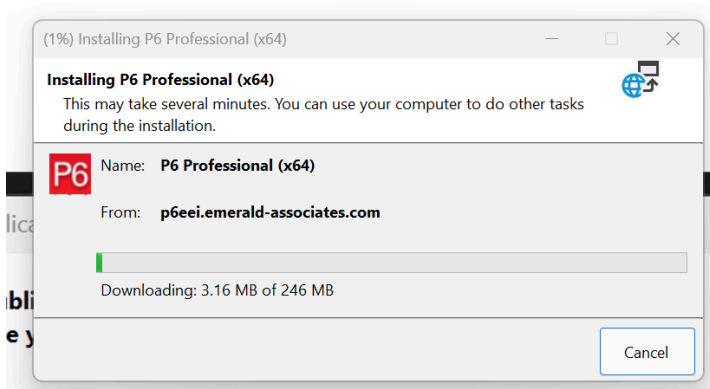
Then click on "Run anyway"



Click on "Install"



The software will be downloaded



Database setup

The database will be already configured. If you need to add more servers, you can do it this way:

There are two to add the database connections to the Primavera P6 EPPM client

1- USING "PRMBOOTSRAPV2.XML"

The file can be download on URL below:

<https://p6eei.emerald-associates.com/PRMBootStrapV2.xml> .

This file need to be copied into the Primavera P6 client installation folder.

Default folder: **C:\Oracle\P6\23.12.4**

2- MANUAL SETUP

Click window start icon and search for "Database Configuration 22 (x64)", it can be find under the "Oracle - Primavera P6" menu folder.

Click "Add" button.

	A	B
1	Database	Connection String
2	Test	Test@https://p6eei.emerald-associates.com/p6procloudconnect/
3	Prod	Prod@https://p6eei.emerald-associates.com/p6procloudconnect/

1- Change Driver type to "P6 Professional Cloud Connect"

2- Define "Database Alias" using column "Database Alias" on the table below.

3- Define "Connection String" using column "Connection String" on the table below.

(*) It needs to be exactly how it is on table, including the spaces and case-sensitive.

4- Update "Read Timeout" to 9999.

5- Uncheck "Use SAML SSO".

6- Uncheck "Enable local cache"

7- Click "Save"

8- Repeat this same procedure for all of the database aliases (if exists).

Using P6 Primavera

Click window start icon and search for "P6 Professional 22 (x64)", it can be find under the "Oracle - Primavera P6" menu folder.